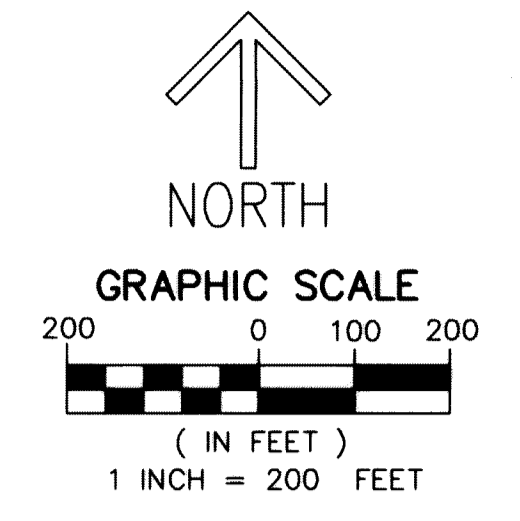


- LEGEND/ABBREVIATIONS**
- CL - CENTERLINE
 - Δ - DELTA (CENTRAL ANGLE)
 - AC - ACRES
 - AE - ACCESS EASEMENT
 - CB - CHORD BEARING
 - CD - CHORD DISTANCE
 - CDD - COMMUNITY DEVELOPMENT DISTRICT
 - DE - DRAINAGE EASEMENT
 - DB - DEED BOOK
 - ESMT - EASEMENT
 - L - ARC LENGTH
 - RBE - ROADWAY BUFFER EASEMENTS
 - LB - LICENSED BUSINESS
 - MON - MONUMENT
 - PB - PLAT BOOK
 - PG - PAGE
 - O.R.B. - OFFICIAL RECORD BOOK
 - FND PBC - FOUND PALM BEACH COUNTY SURVEY MONUMENT
 - PBG - PALM BEACH GARDENS
 - R - RADIUS
 - RB - RADIAL BEARING
 - RW - RIGHT-OF-WAY
 - SF - SQUARE FEET
 - S.F.W.M.D. - SOUTH FLORIDA WATER MANAGEMENT DISTRICT
 - SR - STATE ROAD
 - SUAE - SEACOAST UTILITY AUTHORITY EASEMENT
 - UE - UTILITY EASEMENT
 - PRM - DENOTES PERMANENT REFERENCE MONUMENT
 - 5/8" IRON ROD WITH CAP STAMPED "C&W PRM LB3591"
 - - DENOTES PERMANENT CONTROL POINT

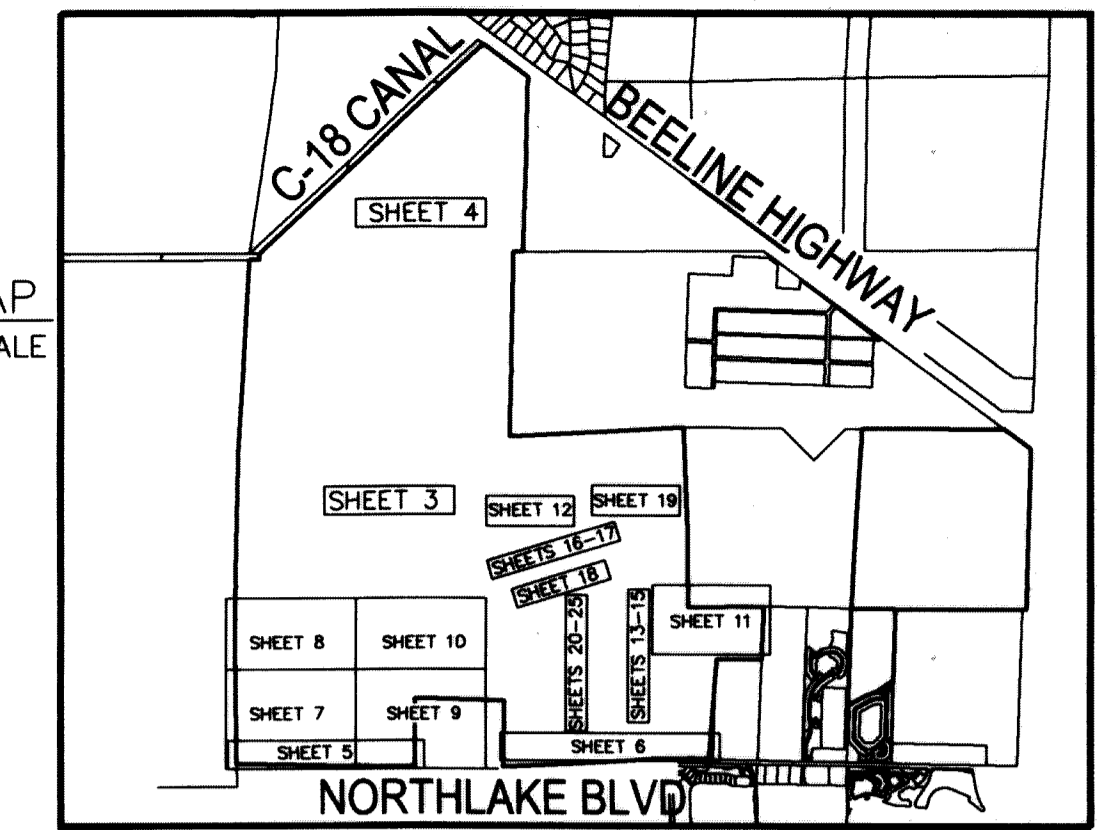
AVENIR

BEING A PORTION OF SECTIONS 28, 32, 33,
TOWNSHIP 41 SOUTH, RANGE 41 EAST,
TOGETHER WITH ALL OF SECTIONS 4, 9 AND 10,
AND A PORTION OF SECTIONS 5, 8, 14, 15, 16 AND 17,
TOWNSHIP 42 SOUTH, RANGE 41 EAST,
CITY OF PALM BEACH GARDENS, PALM BEACH COUNTY, FLORIDA

THIS INSTRUMENT PREPARED BY
RONNIE L. FURNISS
OF
CAULFIELD and WHEELER, INC.
SURVEYORS - ENGINEERS - PLANNERS
7900 GLADES ROAD, SUITE 100
BOCA RATON, FLORIDA 33434 - (561)392-1991
CERTIFICATE OF AUTHORIZATION NO. LB3591
NOVEMBER 2018



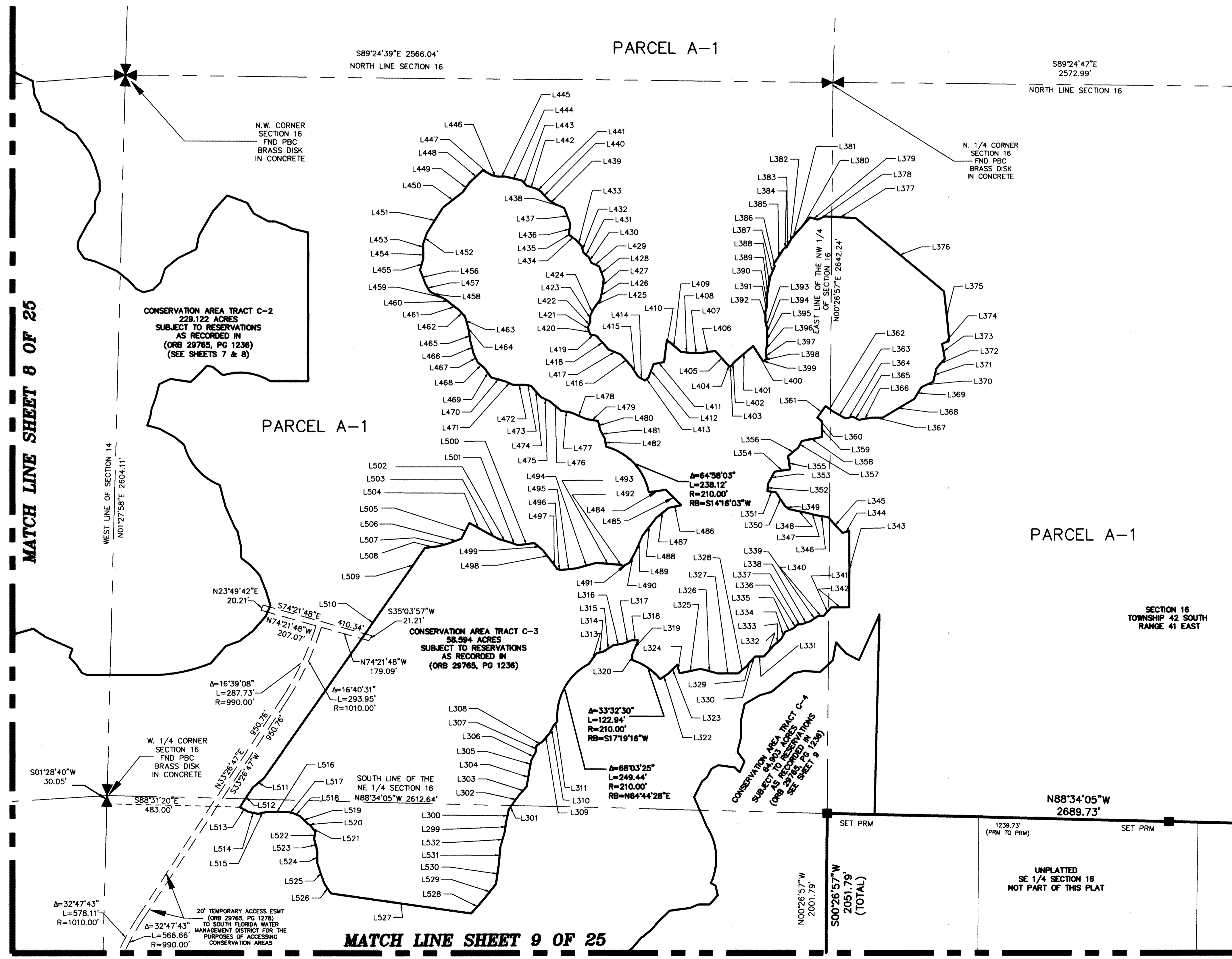
↑
NORTH
KEY MAP
NOT TO SCALE



94

SHEETS 1-2 COVER
SHEETS 3-4 OVERALL SITE
SHEETS 5-6 DETAIL SOUTH BOUNDARY
SHEETS 7-10 DETAIL CONSERVATION AREAS
SHEET 11 DETAIL PARCEL E/G
PARK/CIVIC/RECREATION
SHEET 12 DETAIL CITY ANNEX TRACT
& PARCEL A-4
SHEETS 13-18 DETAIL TRACT R1
SHEET 19 DETAIL PARCEL C
SHEETS 20-25 DETAIL TRACTS R2 & R3

SHEET 10 OF 25



Line #	Direction	Length	Line #	Direction	Length	Line #	Direction	Length	Line #	Direction	Length
L299	N08°10'15"E	37.83	L320	S00°20'14"E	23.41	L341	N41°33'42"E	40.70	L361	N35°19'30"E	51.45
L300	N12°18'25"E	44.07	L321	N05°53'30"E	33.34	L342	N08°39'46"E	66.72	L362	S54°40'02"E	35.57
L301	N33°36'07"E	23.88	L322	N45°58'21"E	47.10	L343	N00°01'41"W	276.21	L363	S81°12'25"E	49.21
L302	N36°27'01"E	43.85	L323	S18°58'18"E	31.19	L344	S74°05'31"W	26.43	L364	N77°05'43"E	27.85
L303	N41°33'40"E	38.55	L324	N78°12'30"E	77.83	L345	N42°14'09"W	78.00	L365	S81°12'28"E	24.02
L304	N09°50'15"E	68.66	L325	S74°45'59"E	65.13	L346	N01°17'29"W	45.97	L366	N00°38'50"E	45.20
L305	N08°50'13"E	26.79	L326	N08°39'46"E	72.29	L347	N74°45'59"W	22.57	L367	N08°39'46"E	42.87
L306	N07°57'30"E	34.41	L327	N49°46'18"E	39.21	L348	N78°02'14"W	76.74	L368	N08°15'57"E	132.93
L307	N09°50'12"E	24.14	L328	N41°33'40"E	34.35	L349	N50°26'30"W	19.12	L369	N30°32'50"E	48.56
L308	N55°53'36"E	25.21	L329	N41°33'40"E	13.26	L350	N52°56'31"W	58.04	L370	N05°57'30"E	47.47
L309	N41°33'45"E	38.68	L330	N41°33'40"E	50.46	L351	N02°24'19"W	31.37	L371	N41°02'22"E	49.74
L310	N07°57'39"E	34.40	L331	N41°33'40"E	50.46	L352	N05°21'21"E	25.76	L372	N41°33'42"E	46.79
L311	N41°33'40"E	19.58	L332	N47°56'30"E	39.43	L353	N07°57'29"E	51.14	L373	N10°30'30"W	54.18
L312	N36°02'21"E	47.78	L333	N27°57'31"E	29.38	L354	N01°45'55"E	56.48	L374	N45°38'02"E	28.23
L313	N77°05'43"E	24.23	L334	N07°57'31"E	29.38	L355	N08°16'52"E	29.87	L375	N00°01'51"W	179.34
L314	N07°10'15"E	44.32	L335	N49°46'18"E	23.56	L356	N48°46'13"E	47.46	L376	N50°19'23"W	416.04
L315	N07°10'15"E	44.32	L336	N49°46'18"E	23.56	L357	N07°57'01"E	27.25	L377	N08°58'49"W	113.82
L316	N07°57'01"E	35.82	L337	N49°46'18"E	23.56	L358	N78°06'22"E	74.88	L378	S85°38'50"E	28.85
L317	N08°17'03"E	32.78	L338	N70°06'22"E	36.93	L359	N00°00'00"E	57.58	L379	N74°45'59"W	29.21
L318	N08°39'51"E	24.84	L339	N55°53'33"E	37.70	L360	N53°43'23"W	20.75	L380	S41°33'40"W	80.45
L319	S23°49'35"W	53.06	L340	N08°39'46"E	19.88						

Line #	Direction	Length	Line #	Direction	Length	Line #	Direction	Length	Line #	Direction	Length
L381	S41°33'40"W	18.27	L401	S49°46'13"W	88.85	L421	N16°58'06"W	9.00	L441	N01°12'17"W	19.13
L382	S30°32'55"W	24.15	L402	S41°33'43"W	20.88	L422	N23°42'24"E	22.61	L442	N72°40'18"W	35.64
L383	S30°32'46"W	14.48	L403	S65°38'08"W	6.22	L423	N00°20'09"W	23.28	L443	N42°13'50"W	25.31
L384	S80°32'08"W	11.74	L404	N42°14'11"W	6.21	L424	N27°57'31"W	26.49	L444	N76°25'28"W	61.14
L385	S33°36'01"W	65.85	L405	N42°14'06"W	70.28	L425	N30°19'59"W	40.77	L445	S88°39'46"W	27.48
L386	S29°37'07"E	9.12	L406	S81°43'55"W	55.46	L426	N12°16'26"E	30.83	L446	N77°46'03"W	21.44
L387	S23°49'27"W	43.80	L407	S88°39'46"W	29.24	L427	N08°16'03"E	43.95	L447	N01°12'17"W	39.42
L388	S09°50'12"W	36.07	L408	N08°16'33"W	40.39	L428	N20°04'40"W	48.15	L448	S48°46'40"W	66.25
L389	S08°17'42"W	36.22	L409	N50°26'36"W	66.63	L429	N68°16'25"W	30.88	L449	S30°46'48"W	42.35
L390	S00°20'14"E	35.46	L410	S00°58'04"W	80.62	L430	N24°29'47"W	22.77	L450	S02°16'14"W	90.40
L391	S16°16'44"W	18.97	L411	S78°06'19"W	36.65	L431	N50°26'31"W	25.82	L451	S32°15'50"W	108.14
L392	S00°20'12"E	36.72	L412	S20°41'30"W	52.17	L432	N12°56'43"W	22.88	L452	S19°24'24"W	39.65
L393	S12°58'51"E	24.84	L413	S53°02'56"W	17.23	L433	N42°14'06"W	33.46	L453	S00°20'00"E	28.58
L394	S00°20'00"E	21.46	L414	N01°12'23"W	27.34	L434	N53°43'12"W	28.40	L454	S00°20'12"E	28.64
L395	S00°20'14"E	34.13	L415	N32°59'25"W	48.11	L435	N30°04'43"W	6.77	L455	S18°18'53"W	42.82
L396	S09°50'12"W	33.04	L416	N42°14'06"W	56.50	L436	N09°50'12"W	35.53	L456	S21°22'03"E	56.12
L397	S10°30'38"E	21.28	L417	N67°36'13"W	47.13	L437	N21°22'06"W	62.76	L457	S31°13'10"E	30.03
L398	S47°56'27"W	12.90	L418	N42°14'03"W	67.49	L438	N06°16'31"W	37.97	L458	S81°12'24"E	32.70
L399	S80°39'46"W	3.98	L419	N77°45'12"W	22.09	L439	N58°33'44"W	27.42	L459	S68°18'18"E	27.38
L400	N32°58'27"W	65.08	L420	N20°04'40"W	17.74	L440	N42°14'01"W	41.73	L460	S00°26'32"E	25.57

Line #	Direction	Length	Line #	Direction	Length	Line #	Direction	Length	Line #	Direction	Length
L461	S53°43'12"E	38.83	L481	S28°37'53"E	33.85	L501	N74°45'59"W	43.22	L521	S09°50'18"W	25.36
L462	S42°14'06"E	32.59	L482	S10°30'29"E	31.77	L502	S14°42'49"E	46.07	L522	S14°42'49"E	46.07
L463	S16°58'06"E	31.47	L483	N81°43'56"E	63.19	L503	N01°12'19"W	46.81	L523	S00°20'08"E	44.06
L464	S12°58'41"E	23.06	L484	S44°33'39"E	78.23	L504	S28°48'28"W	63.83	L524	S18°25'38"E	75.98
L465	S08°50'21"E	37.14	L485	S78°12'30"W	46.80	L505	S19°07'11"W	41.42	L525	S34°16'24"E	44.31
L466	S14°42'49"E	47.20	L486	S51°08'21"W	51.71	L506	S74°05'45"W	42.43	L526	S81°51'19"E	54.37
L467	S24°29'50"E	34.46	L487	S37°13'32"W	80.89	L507	S31°44'05"W	53.15	L527	N41°33'52"E	68.17
L468	S50°26'32"E	30.83	L488	S23°46'28"W	62.91	L508	S35°03'57"W	146.64	L528	N38°16'28"E	70.46
L469	S30°00'18"E	42.92	L489	S28°56'45"W	46.52	L509	S30°03'57"W	868.73	L529	N08°51'58"E	75.40
L470	S74°45'57"E	52.09	L490	S84°07'55"W	24.87	L510	S00°15'47"W	53.26	L530	N04°57'31"E	42.01
L471	S88°16'25"E	33.23	L491	S42°14'06"W	15.81	L511	S37°07'10"E	85.89	L531	N04°57'31"E	58.41
L472	N08°39'51"E	41.07	L492	N74°45'59"W	15.81	L512	S32°28'47"E	58.89	L532	N18°18'55"E	58.17
L473	S79°46'42"E	22.37	L493	N85°47'04"W	82.93	L513	S81°12'20"E	34.38			
L474	S42°14'04"E	54.84	L494	S75°14'24"W	75.26	L514	S77°46'00"E	37.06			
L475	S84°32'36"E	34.41	L495	S83°52'43"W	54.18	L515	N77°46'00"E	30.67			
L476	S50°36'43"E	55.57	L496	N77°46'12"W	14.55	L516	N08°39'50"E	76.04			
L477	S79°46'48"E	37.19	L497	N37°07'13"W	36.13	L517	S77°46'00"E	22.59			
L478	S68°16'25"E	59.52	L498	N37°07'14"W	48.31	L518	S88°18'21"E	23.36			
L479	S79°46'47"E	42.71	L499	N50°26'36"W	41.94	L519	S48°57'31"E	42.01			
L480	S12°58'43"E	32.30	L500	S83°18'17"W	58.43	L520	S81°12'17"E	11.29			
			L501	N69°57'17"W	28.90	L521	S37°07'10"E	28.20			